

Trumpet 1-2

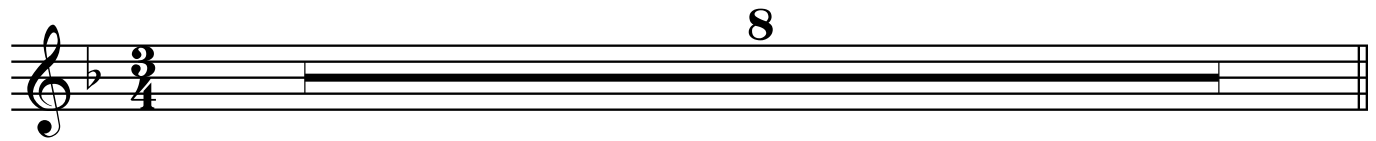
VERSION: Keys of Eb & E

just add...Horns In Christ Alone

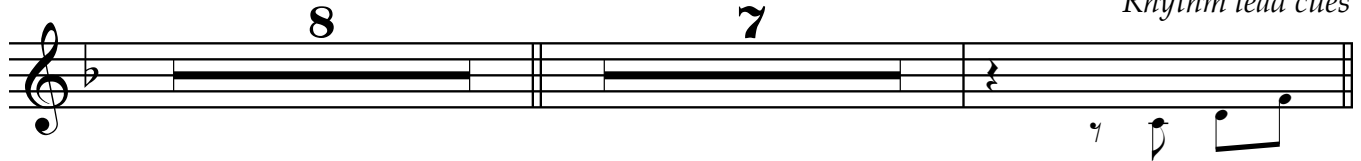
KEITH GETTY and STUART TOWNEND

Horns arranged by JEFF D ANDERSON

Reverently majestic (♩ = 69)



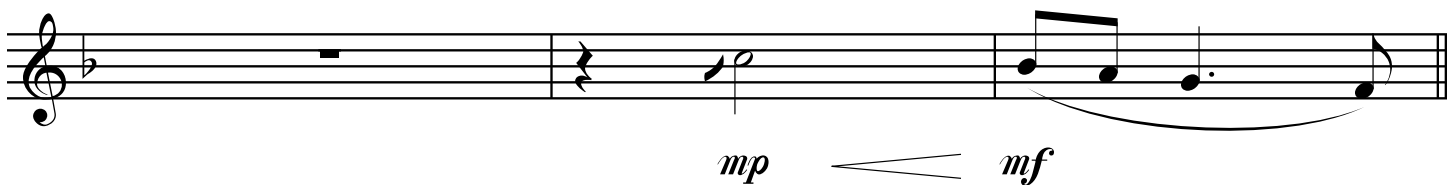
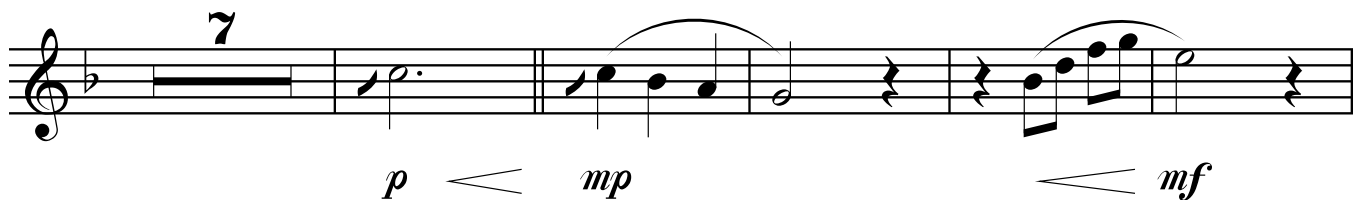
VERSE 1 "In Christ alone..." **REFRAIN** "What heights of love..." Turnaround
Rhythm lead cues



SHORT TURNAROUND



VERSE 2 "In Christ alone..." **REFRAIN** "Till on that cross..."



TURNAROUND



VERSE 3 "There in the ground..."

Musical notation for the first line of Verse 3. It features a treble clef and a key signature of one flat. The notation includes a four-measure rest, followed by a triplet of eighth notes, and then a series of eighth notes with accents. Dynamics include *mf* and *f*. A triplet of eighth notes appears at the end of the line.

REFRAIN "And as He stands..."

Musical notation for the first two lines of the Refrain. The first line starts with a treble clef and a key signature of one flat, featuring chords and eighth notes with accents. The second line continues with eighth notes and a final chord. Dynamics include *f*.

INSTRUMENTAL-KEY CHANGE

Musical notation for the Instrumental-Key Change section. The first line starts with a treble clef and a key signature of one flat, featuring a triplet of eighth notes and a dynamic of *mf*. The second line continues with eighth notes and chords, showing a key change to two sharps (E major). Dynamics include *f* and *fp*.

VERSE 4 "No guilt in life..."

Musical notation for the first two lines of Verse 4. The first line starts with a treble clef and a key signature of two sharps (E major), featuring chords and a dynamic of *f*. The second line continues with eighth notes and chords, ending with a triplet of eighth notes. Dynamics include *f*.

REFRAIN "No power of hell..."

Musical notation for the first line of the refrain. It consists of a single staff in treble clef with a key signature of three sharps (F#, C#, G#). The melody begins with a quarter rest, followed by a quarter note G#4 with an accent (>). The second measure contains a quarter rest, a quarter note G#4 with an accent (>), and a quarter note A5 with an accent (>). The third measure features a dotted quarter note G#4 with an accent (>) and a quarter note G#4 with an accent (>). The fourth measure has a quarter note G#4 with an accent (>) and a quarter note F#4 with an accent (>). The fifth measure contains a quarter rest, a quarter note G#4 with an accent (>), and a quarter note A5 with an accent (>). The sixth measure has a quarter note G#4 with an accent (>) and a quarter note F#4 with an accent (>). The seventh measure consists of a quarter note G#4 with an accent (>) and a quarter note A5 with an accent (>). The eighth measure has a quarter note G#4 with an accent (>) and a quarter note F#4 with an accent (>). The line ends with a double bar line.

Musical notation for the second line of the refrain. It continues on a single staff in treble clef with a key signature of three sharps. The first measure has a quarter note G#4 with an accent (>). The second measure has a quarter note G#4 with an accent (>). The third measure has a quarter note G#4 with an accent (>). The fourth measure has a quarter note G#4 with an accent (>). The fifth measure has a quarter note G#4 with an accent (>). The sixth measure has a quarter note G#4 with an accent (>). The seventh measure has a quarter note G#4 with an accent (>). The eighth measure has a quarter note G#4 with an accent (>). The ninth measure has a quarter note G#4 with an accent (>). The tenth measure has a quarter note G#4 with an accent (>). The eleventh measure has a quarter note G#4 with an accent (>). The twelfth measure has a quarter note G#4 with an accent (>). The line ends with a double bar line.

REFRAIN "No power of hell..."

Musical notation for the third line of the refrain. It continues on a single staff in treble clef with a key signature of three sharps. The first measure has a quarter note G#4 with an accent (>). The second measure has a quarter note G#4 with an accent (>). The third measure has a quarter note G#4 with an accent (>). The fourth measure has a quarter note G#4 with an accent (>). The fifth measure has a quarter note G#4 with an accent (>). The sixth measure has a quarter note G#4 with an accent (>). The seventh measure has a quarter note G#4 with an accent (>). The eighth measure has a quarter note G#4 with an accent (>). The ninth measure has a quarter note G#4 with an accent (>). The tenth measure has a quarter note G#4 with an accent (>). The eleventh measure has a quarter note G#4 with an accent (>). The twelfth measure has a quarter note G#4 with an accent (>). The line ends with a double bar line.

Musical notation for the fourth line of the refrain. It continues on a single staff in treble clef with a key signature of three sharps. The first measure has a quarter rest. The second measure has a quarter note G#4 with an accent (>). The third measure has a quarter note G#4 with an accent (>). The fourth measure has a quarter note G#4 with an accent (>). The fifth measure has a quarter note G#4 with an accent (>). The sixth measure has a quarter note G#4 with an accent (>). The seventh measure has a quarter note G#4 with an accent (>). The eighth measure has a quarter note G#4 with an accent (>). The ninth measure has a quarter note G#4 with an accent (>). The tenth measure has a quarter note G#4 with an accent (>). The eleventh measure has a quarter note G#4 with an accent (>). The twelfth measure has a quarter note G#4 with an accent (>). The line ends with a double bar line.

Rit.